

Using the Nickel Tracker Shopping Cart Interface

Copyright © 2002

The Nickel Tracker Shopping Cart Interface (NTSCI) allows data from your shopping cart to be downloaded into the Nickel Tracker program. This data is then processed just like any other customer's order.

The first step is getting the data from the cart into an ASCII file.

Below is the layout of the ASCII file Nickel Tracker will look for.
This file must be a comma delimited ASCII file.

-- GENERAL RULES --

The file can be called any name you wish. It must exist on the computer that the Nickel Tracker data exist on or be available through Windows PATHING or MAPPING.

The Nickel Tracker will scan for this file and read it into a FoxPro DBF file. The file is read on a timer that you set. The file will then be erased, make sure your routine creates the file if not present and adds to the file if the file is present.

Any customer or item not found within the Nickel Tracker will be created from information held in this file. Make sure each new customer has a unique CUSTID, if it's an existing customer, use the existing CUSTID to keep from duplicating data within the Nickel Tracker. CUSTID and PRODID are the linking fields.

All Character fields must start with a double quote " and end with a double quote " All fields must be separated with a comma.

Example: "ABCD","AB34523","COMPANYNAME",.....

--> Make sure no Double Quotes are imbedded within any of the data strings!!!

We suggest making all fields CAPITAL letters.

All numeric fields must NOT be surrounded by quotes.

All fields must be present and in the order shown below, if an empty character, just have two double quotes, if numeric value is zero, place a zero.

Example: "ABCD","",123.45,0,324.56,"","MY TOWN",.....

Notice above the second, fourth and sixth fields are "Blank"

All fields do not have to be the length shown below, these are maximum lengths.
If a numeric Width is 12 with decimal of two - the largest data can be 12 Or 9 plus period plus 2
example 123456789.12 . If a numeric width is 12 - decimal 2, a value of 23.45 is valid.

End each line with a Carriage Return - Line Feed

-- Row Explanation --

Each row (line) is one line item per the order. A quantity can be entered per line if each item is the same (field 32) -

Add Shipping Charge - If you want to add a shipping charge for the entire order - make a line item with the PRODID = "SHIPCHRG" - this is a RESERVED word to our Shopping Cart import routine and will not show up on the invoice as a line item but will show up as a shipping charge - place in field # 21 the shipping charge. Make sure all other fields are filled accordingly.

Tax Pre-calculated by Shopping cart - If you want to add a shipping charge for the entire order - make a line item with the PRODID = "TAX" - this is a RESERVED word to our Shopping Cart import routine and will not show up on the invoice as a line item but will show up as a shipping charge - place in field # 44 the shipping charge. Make sure all other fields are filled accordingly. Use field 44 or fields 36 thru 39 – if you use both, taxes will be calculated twice.

-- Explanation of Selected Fields (most fields self-explanatory) --

Field#

1 - This should be the identifier for the customer

2 - This is the linking field per order - if a customer orders three different items, field 2 should have the same order number within it.

15 - fields 15 through 20 are Alternate Shipping address.

24 - This field should have a character "A" within it, if your shopping cart supports different purchasing levels - we support 3 prices A, B, and C

25 - Place the same data in this field as in field # 7 - (State) This allow breakout of taxes due to each state within Nickel.

26 - If your shopping cart gets credit card approval - place the approval code in this slot and then the Nickel Tracker will not approve the sale again. Leave blank if you want Nickel Tracker to get approval on the card.

27 - Once the credit card number is moved into Nickel Tracker it is encrypted and can only be read by or through the Nickel Tracker.

30 - Is the SKU or identifier of the individual item.

33 - Price each.

34 - If this item is taxed - enter a T in this field else enter a F (no quotes).

35 - This is the tax rate applied to this item if 6% it would be entered as .0600

36 - 36 through 39 are additional taxes you may need to apply.

40 - Place a "T" in this field.

41 - Place the date in this field example: 03/23/2002 - without quotes

42 - This is notes associated with the item and example could be sizes or colors or other information needed for this order, this will show up as an line item note on the item. Keep the length of note as short as practical and make sure to wrap in quotes.

43 - Total Charged to the Credit Card if your Cart does the Credit Card Approval. If Cart does not get approval - place a Zero (0) in this field.

44 - Tax Total - If your shopping cart calculates the tax for you, you can place the total tax for this invoice in this field. The PRODID field should be TAX so as to not create a line item within the invoice screen.

Field	Field Name	Type	Max-Width	Decimal Places
1	CUSTID	Character	10	
2	ORDERNUM	Character	10	
3	COMPANY	Character	40	
4	STREET	Character	40	
5	STREET2	Character	40	
6	CITY	Character	30	
7	STATE	Character	15	
8	ZIP	Character	10	
9	COUNTRY	Character	40	
10	PHONE	Character	20	
11	FAX	Character	20	
12	CONTACT	Character	40	
13	EXT	Character	5	
14	EMAIL	Character	60	
15	ASCOMPANY	Character	30	
16	ASCONTACT	Character	30	
17	ASSTREET	Character	30	

18	ASCITY	Character	30	
19	ASSTATE	Character	2	
20	ASZIP	Character	10	
21	SHIPCOST	Numeric	10	2
22	SHIPPOUND	Numeric	12	4
23	SHIPINST	Character	40	
24	PURLEVEL	Character	1	
25	TAXTYPE	Character	16	
26	CCCODE	Character	10	
27	CREDITCARD	Character	20	
28	CARDEXPIRE	Character	5	
29	CARDS	Character	10	
30	PRODID	Character	16	
31	DESCRIPT	Character	40	
32	QTY	Numeric	9	4
33	EACH	Numeric	14	4
34	TAXABLE	Logical	1	
35	CTRATE1	Numeric	8	5
36	CTRATE2	Numeric	8	5
37	CTRATE3	Numeric	8	5
38	CTRATE4	Numeric	8	5
39	CTRATE5	Numeric	8	5
40	NEWORDER	Logical	1	
41	IDATE	Date	10	
42	LINENOTES	Character	180	
43	CARDTOT	Numeric	10	2
44	TAXTOTAL	Numeric	10	2

Below are sample lines of data Nickel will be looking for.

If you place the two lines of sample data below into Notepad and turn word wrapping off, you will be able to see the sample data correctly. There should be no spaces between lines, we do spaces between lines below to show the two different lines.

The sample is Richard Nixon ordering a Widget and having it shipped to the White house. Shipping charges are \$12.00 in this case.

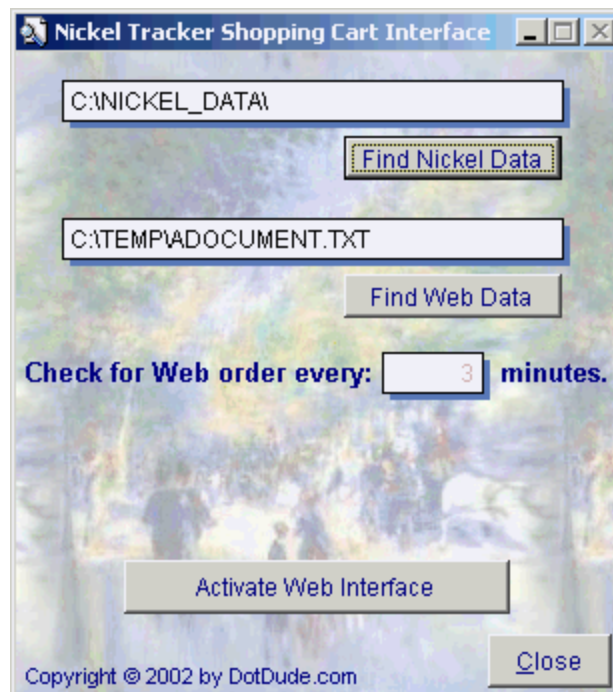
```
"LVAXX","100296","HAROLDS GENERAL STORE","4015 CENTRAL AVENUE","SUITE
1212","ST. PETERSBURG","FL","33701","UNITED STATES","727-455-3545","727-449-
4494","Richard Nixon","121","tricky@dc.com","White House","Big Ed","123 East Main
Street","Thurmont","MD","21727",12.00,3.0000,"Fed Ex
Blue","A","FL","ABCDE","432344563847562345","12/34","VISA","AG","WIDGET EXTRA
LARGE",2.0000,120.0000,T,0.07000,0.00000,0.00000,0.00000,0.00000,T,01/21/2002,"Make
sure the wood is sanded very smooth!",268.80
```

```
"LVAXX","100296","HAROLDS GENERAL STORE","4015 CENTRAL AVENUE","SUITE
1212","ST. PETERSBURG","FL","33701","UNITED STATES","727-455-3545","727-449-
4494","Richard Nixon","121","tricky@dc.com","White House","Big Ed","123 East Main
```

Street","Thurmont","MD","21727",12.00,3.0000,"Fed Ex
Blue","A","FL","ABCDE","432344563847562345","12/34","VISA","SHIPCHRG","SHIPPING
CHARGE",1.0000,75.0000,T,0.07000,0.00000,0.00000,0.00000,0.00000,T,01/21/2002,"",268.8
0

Once your Shopping Cart creates the lines of data as above you will be able to use the NTSCI for getting this data into the Nickel Tracker.

Setting up the NTSCI



On the CD is a folder called **ShopCart** with a file in it called **NICSC.EXE** – this file should be dropped into the same folder as the Nickel Tracker Data.

You should also have within your possession a file called **SC_CODE.DBF**. Also drop this file into the same folder as your Nickel Tracker data.

Click on the **Find Nickel Data** button – this will open a search window and it should be pointed to the same folder as the Nickel Tracker data.

Now click on the **Find Web Data** button – this will open a window and allow you to find the ASCII file created to the specifications outlined above.

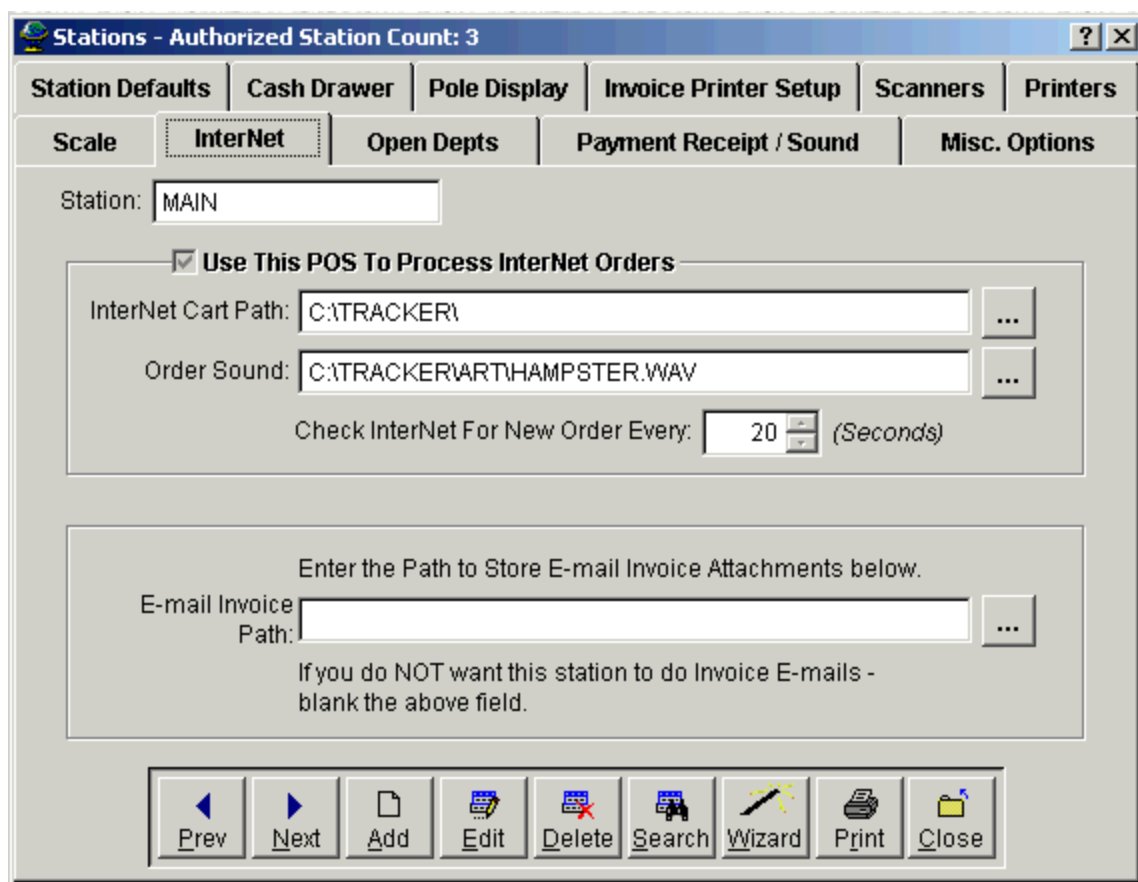
Now enter how many minutes in between times you want the NTSCI to check for a new order. We recommend 15 minutes but any setting can be placed.

Once all of the above is setup, click on the **Activate Web Interface** button. If all is setup correctly, the screen should minimize and run in the back ground on your computer. The program works in minimized mode or normal mode but the **De-Activate Web Interface** button must be present to show that it is currently working and looking for new data.

To **De-Activate** – re-size the window back to normal and click on the **De-Activate Web Interface** button. You can now click the Close button to close the program.

Getting Nickel Tracker Ready

We now have to go into Nickel Tracker and set it's setting to except the new orders coming in from the web site.



Go to the Stations in Nickel Tracker and then to the InterNet tab. For this station to take an order, check the **Use This POS to Process InterNet Orders** check box.

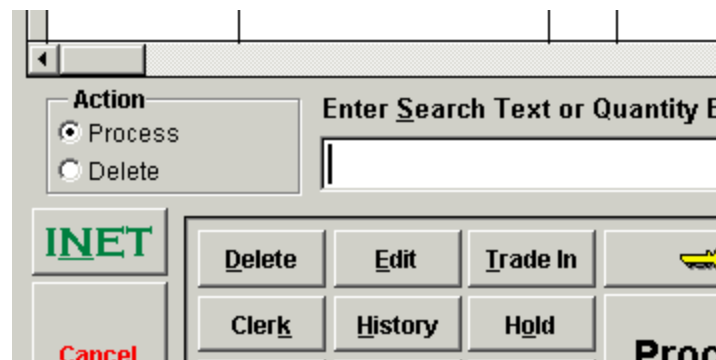
Next, **Find the Internet Cart Path** – this path should match the first button on the NTSCI.

You can also select a sound to play when an InterNet order comes in.

Now set how often you want the Nickel Tracker to check for an InterNet order. This is done in seconds where the NTSCI is done in minutes.

Note: If you have NTSCI set to 15 minutes and the Nickel Tracker set to 900 seconds (15 minutes) that the system can go as long as 29 minutes before finding an order. Please keep this in mind.

Doing a Web Sale



To do a web sale, go to the Standard Invoicing screen. This is the only invoice screen that can do a web sale. If a Web sale comes in the INET button above will show on screen and the wave file you selected will play. By clicking on the INET button, this sale will be brought up onto the Invoice screen and you now handle just like any other sale.

Some Rules That Apply

- If you are in the middle of a sale and a Web sale comes in, the INET button will still show but will be disabled until you are finished your current sale.
- If a customer shows up in a Web sale that is not on file, this customer will be added to the Nickel Tracker customer data table automatically.
- If an item purchased shows up on a Web sale and that item does not exist in your inventory file, it will be added to your inventory.
- Edit your customer base on your Web-Site, the next order will over-write your Nickel data of any existing customer. We do this so a customer can maintain his own information on your web site and it will automatically up date your Nickel data.
- If you have multiple stations doing Web orders, when the last order is grabbed by clicking on the INET order, the INET button will disappear off of all other work stations.
- If an alternate shipping address is used, a window will pop open showing you this when the INET button is clicked.
- If your shopping cart processes the credit card online, and this order total does not match the credit card total, a window will pop open showing you that something is not correct

and may need an adjustment. This usually only happens if you are out of stock, substituted an item or added an extra item to the invoice.

- If your shopping cart does not process the credit card, it can be done within Nickel Tracker just like any other sale.
- Credit Card numbers are encrypted once they hit the Nickel Tracker.

Case History

We have many large web-sites using this feature along with the Nickel Tracker but one of the first helped us to design and iron out a lot of the wrinkles in a system like this.

This particular company went from a little store front to owning it's own very large building in a very short time.

With over 40 stations taking orders, about half call in and half Web orders, it was funny to watch the commissioned sales people rush for orders. The INET button was on most of the time and the salesperson knew as soon as they got the current order made another was waiting. After a very, very short training time, these salespeople could knock some orders out very fast. The company had to keep upgrading to faster printers and more shipping people to keep up with the orders.

We are proud to say the Nickel Tracker has worked flawlessly at this site and many others for over 2 years now.